

# Binghamton University MSW Field Education



Volume 2 Issue 2  
Spring, 2005

## Update on Field Instruction

### Placements

This spring the first class of our MSW program will be graduating! Additionally, our first year full time and part-time students will begin seeking placements for this coming fall. We continue to meet and develop field placements to increase the choice and opportunities for our students. Thanks to an overwhelming interest and the strong support of agencies in this region we are now able to offer over 141 placements for our students.

Although students will not begin their second placement until the fall, the process of matching will start soon! Students applied for their second year placements and begin meeting with the Field

Education Office at the end of March. The matching process begins in mid march and we will be contacting agencies by the end of March and the beginning of April.

### Conferences

We are happy to offer two conferences this spring. The first, Dr. Christian Itin, will present, "An Introduction to Adventure-Based Practice" to be held March 24th. A panel of regional practitioners implementing Adventure Based Practice programming will be featured at the end of the conference. The second, free to field instructors, as a token of our appreciation, is Dennis Saleebey who will present on "The Strengths Perspective: What it means for students, field instructors and agencies." on

April 29th. Please join us!

### Evaluation:

We continue to prepare for our self study (the next step toward accreditation). In this light, we have been analyzing the evaluations used in field instruction and course work to ensure that we are meeting our goals and objectives. We are happy to share that we have found that the end of semester evaluations from our first year, indicate that students realized many of the program objectives through their field experience. We could not have done this so successfully without the dedication and commitment of our field instructors and the agencies that support us. Thank you!

-Jennifer Marshall, Director of Field Education

## Accreditation Update

Although we cannot be accredited until after our first students graduate, we are well on our way. Staff and faculty have been busy writing and have just submitted the first draft of our self study. This document involves both describing how we will evaluate the effectiveness of our program in meeting our program goals and

objectives as well as outlining a plan for how we plan to respond to the findings. We are incorporating the evaluations used in field instruction (both those completed by students and field instructors), end of the year supplemental course evaluations, assignments, feedback from students, field

(Continued on page 2)

### Inside this issue:

<i>Dennis Saleebey</i>	2
<i>Faculty and Staff Transitions</i>	2
<i>Camera helps Addicts see the light</i>	3
<i>Adventure Based Practice</i>	3
<i>Featured Field Site</i>	3
<i>New Admission Coordinator</i>	4
<i>International Visitors</i>	6
<i>Students to present at CSWE Conference</i>	6
<i>Student Perspective</i>	7
<i>First Class to Graduate</i>	8
<i>Faculty Updates &amp; Collaborations with</i>	

### Field Advisory Board

**Eve Abrams**  
**Ronee Brimberg**  
**Laura Bronstein**  
**Bonnie Donovan**  
**Brian Hart**  
**Ellen Niu**  
**Dara Raboy- Picciano**  
**Barbara Ravas**  
**Ed Rivera**  
**Tracy Rondeau**



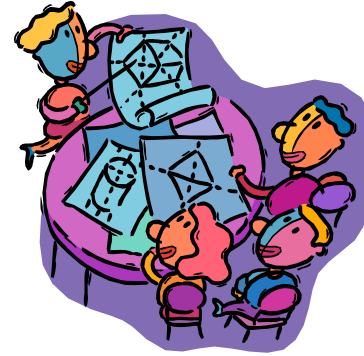
# Pursuing Possibilities



## Binghamton University

*(Continued from page 1)*  
instructors, advisory committees, and the community. We are developing and will be using an evaluation for field instructors that seeks feedback about the program at the end of the spring semester.

We are preparing for a site visit on April 13th.



## As a Thanks to Field Instructors, Dennis Saleebey will be coming!



Dennis Saleebey, retired professor and well-renowned author of the strengths perspective in social work, is coming for an all day conference on April 29<sup>th</sup>, sponsored by the

Division of Social Work Program at Binghamton University. Dennis Saleebey will speak on "The Strengths Perspective": What it means for students, field instructors, and agencies". This conference is being held to thank all current field supervisors for generously donating their time to give our students a hands-on experience at many different community human service agencies. The cost is free to all current field supervisors and students. The cost to the general public is \$25.00 The

conference will take place at the Kalurah Shrine Center, located at 625 Dickson Street in Endicott, NY. Registration and directions are available as a link from our web page.

<http://sehd.binghamton.edu/programs/msw/Saleebey.pdf>

## Staff and Faculty Transitions

Faculty and students are saddened by the recent announcement that Betsy Kelchner has resigned from her position as Assistant Professor in the Division of Social Work at Binghamton University. She leaves to follow a calling to return to the west where she is drawn to

the mountains of Colorado. Betsy has been a wonderful asset, not only to the program but to her students as well. Her graciousness, compassion, collegiality, ambition, and tranquility inadequately describe her myriad of contributions to the students and program.

Students of the program gathered a collection of well wishes and thoughts leave with Betsy and her family.

Students Say:

"An advocate in the tru-

*(Continued on page 5)*

## Adventure-Based Practice

**T**hursday March 24th, 2005 we are happy to be co-sponsoring a day long conference with Union Endicott school district. Tom Mitchell, a field instructor in our program integrates Adventure-Based Practice in the school setting and expressed an interest in bringing Dr. Christian Itin, an associate social work faculty from the State University of New York at Brockport here to share his expertise. Together, the Union Endicott School District and the Division of Social Work have worked collaboratively to arrange this conference.

Dr. Itin has worked with Colorado Outward Bound School as a staff trainer, program director, course director and instructor. He has designed and implemented programs for a variety of populations ranging from corporate managers, adolescents, chronically mentally ill, families and those struggling with chemical dependency. He has worked locally

for the Cornell University Outdoor Program, Wilderness Reflections and the Cayuga Nature Center. He has received international attention and has presented at conferences throughout the world, most recently traveling to Taiwan. His most recently published, *Family Unity Program for HIV Affected Families; Creating a family centered and community building context for intervention.*

According to Dr. Itin, Adventure Based Practice can be defined as, "The use of games (primarily new and cooperative), initiatives (problem solving activities), trust activities, high adventure activities (ropes courses, rock climbing, white water kayaking, and related activities), wilderness activities (backpacking, canoeing or other wilderness expedition forms) as part of an intentional change process based on the philosophy of experiential education." This practice can be used across disciplines and with a variety of populations. He explains, "True Adventure Therapy is more than the addition of adventure experiences to an existing psychotherapy process. It is a new form of therapy that blends, integrates, and synthesizes adventure-based practice, experiential education, and principles from a number of schools of psychotherapy. There appear to be elements of humanism, existentialism, strategic structural, narrative, solution and problem solving approaches in adventure therapy. In general it appears to be more consistent with post-modern thinking."

We are featuring regional practitioners addition to Dr. Itin, who use Adventure-Based Practice across settings. Brian Presto, from Children's Home of Wyoming Conference, Tom Mitchell and Andrea Russo (MSW student at UE school), Norm Pure, faculty at Ithaca College who designed and implemented Adventure-Based Practice with Gossett Center Correctional Facility and Rob Pure, who developed the Ithaca College Adventure Based Leadership major will be a part of the regional panel.

## Featured Agency

*Al Alfaro, a field instructor, works at Cayuga Addiction Recovery Services. He was recently featured in the Ithaca Journal. The article below is being re-produced with permission of the author, Andrew Tutino.*

**ITHACA**— The photos surround the group therapy Room inside Cayuga Addiction Recovery Services, giving it life and hope. A

woman on a horse. Children smiling. The running water of one of the many gorges located in Tompkins County. The photos weren't taken by professionals, but they could have been.

It was chemical dependency social worker, Al Alfaro's clients who captured the images on the wall. No digital cameras or specialized lenses. Just disposable cam-

eras and the eye of someone seeing life through a different lens.

It is like a family get-together in here," Alfaro said. "It really works."

Alfaro knows what it is like to see life through different eyes. A former addict, he's been sober since 1996 and now works with those who are traveling down a path

(Continued on page 4)

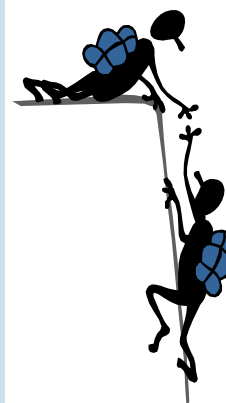
*Adventure Based Practice can be defined as, "The use of games (primarily new and cooperative), initiatives (problem solving activities), trust activities, high adventure activities (ropes courses, rock climbing, white water kayaking, and related activities), wilderness activities (backpacking, canoeing or other wilderness expedition forms) as part of an intentional change process based on the philosophy of experiential education."*

**- Dr. Itin**

**It is not too late to register!**

**The fee for this conference is \$25.00 for students and \$35.00 for professionals. Registration forms can be found at our website:**

<http://sehd.binghamton.edu/programs/msw>



(Continued from page 3)  
with which he's familiar.

Alfaro was a photographer and communications specialist before he changed his life. "I have them use photography as a tool to expand their spirituality and sense of environment," Alfaro said. "They just see the world in a different way than they normally would."

Alfaro's own photography and work were honored this past October when he was awarded the Commissioner's fine Arts Award for the New York State Office of Alcoholism and Substance Abuse Services. His photo, "Together There is Hope in Recovery," was taken while he was working on his master's degree at Binghamton University. It was of two classmates walking down a path in a garden during a break from class.

"In recovery, you can't do it by yourself," Alfaro said. "I couldn't have done it by myself. I tried a few times and failed. You need to do it with other people." Alfaro, 55, said the award was a humbling, gratifying achievement in his life. "It validated my sense of who I am," Alfaro said. "I wanted to be creative in my photography, but I lost that in my addiction. When I was addicted to substances, I lost my creativity. I regained it in many ways and through life experiences. The ceremony was really powerful and spiritual. Like the others who won, I was proud of my recovery."

Alfaro's colleagues at CARS say he has a strong sense of balance in both his work and life. "If you look at the work he is doing, he takes a thoughtful approach," said Rich Bennett, the outpatient director at CARS. "It helps him with the populations he works with."



Photo Irina Peress/Journal Staff

**Addiction counselor and photographer Al Alfaro holds a photograph he took of people walking on a wooded path, entitled "Together there is Hope in Recovery", as he stands at Cayuga Addiction Recovery Services. Behind Alfaro are photographs taken by his clients for therapeutic purposes.**

"He is a very centered guy," said Andrew Merrill, the clinical supervisor at CARS. "He has strong beliefs in spirituality. In using instruments like photographs, he can connect people with nature or their surroundings in general."

Alfaro's hope is that the photographs he has used as one tool in living a better life help those with whom he works.

"There are reasons why we take pictures," he said. "Subtly, there is a message. It is not new and I didn't invent it. I use it in my therapy with them so they can see their own environment. Many use it to reconnect. For these folks, it is really important for them to see this in their lives." written by *Andrew Tutino (Ithaca Journal, November 23, 2004).*

## New Admission and Service Learning Coordinator Welcomed to the MSW Program!

The MSW program welcomes Brian Flynn as the new Admission and Service Learning Coordinator. Brian began his relationship with Binghamton University as a student in the dual degree MASS/MSW program. He became a field instructor for our program last year. Although having left this region for a time, he has since returned. Brian has a strong connection with the area, both professionally as well as personally. Most recently, Brian worked at United Health Services in the HIV Counseling Program and the Emergency Room. He has also served on the critical incident stress management team. Brian has also worked at Catholic Charities, Tioga County DSS, and the George Junior Republic. Brian was a teaching assistant at the University of Arizona, where he assisted in the instruction of a course on the "psychology of gender". He has an avid love of theater, helping to build Ti-Ahwaga Community Players, where he has served as a member of the board of Directors, Director and Actor.



*Brian Flynn, Admission and Service Learning Coordinator*

## Transitions (Continued from page # 2)



***“A guide who walked with me every step of the way.”***

*(Continued from page 2)*  
 est sense of the word!”

“A steadfast supporter in the thick of the fight!”

“A treasure who will be greatly missed!!!”

“Always will be greatly appreciated and admired.”

“Her sincerity and care was the strength that carried me through.”

“I consider myself lucky to have had the opportunity to learn from her.”

“A guide who walked with me every step of the way.”

“She taught me to be the best that I can be.”

“A breath of fresh air that never stops.”

Betsy will be missed. We all wish her the best of luck in her new life adventure.

The Division of Social Work’s faculty and students have also recently said goodbye to another treasured staff member. Nelima Gaonkar resigned from her position as Admissions/Community Coordinator for the social work program. Following her desire to engage in direct practice, she has taken a position with Family and Children’s Society, where she is looking forward to providing direct practice. Nelima’s hard work and dedication to the program and its students will be sorely missed. Nelima’s strong commitment to the success and well-being of the MSW program has enriched the lives of many incoming and matriculated students. Her calm demeanor, warm personality, compassion, and tranquility has embraced and nurtured the many students who have had the opportunity to work with Nelima on a continuous basis. Students, faculty and staff send many thoughts and well wishes with Nelima as she moves on to future endeavors as a professional in the social work field. We will dearly miss her and the smile that never left her face.

Students say:

“She was always ready



***“Thanks for all your help with writing, writing, and more writing!”***

and willing to listen.”

“Her door was always open.”

“Her thoughtfulness will never be forgotten.”

“The smile and laugh was always enlightening on a rainy day.”

“Thanks for all your help, writing, writing, and more writing.”

“Where ever she goes, they will gain a treasure.”

Good Luck to you Nelima in all your future endeavors.

~ Compiled by 1st and 2nd year students

## International Visitors

The students in Dr. Robin Russel's Social Work and Family Violence class had the exciting opportunity to interact with 10 social workers from Russia. Dr. Russell's dedicated efforts established this rare opportunity for the students in the Division of Social Work at Binghamton University. An interpreter connected the voices, ideas and thoughts between the social workers from different countries. Students discussed a wide range of issues which included domestic violence, developmentally disabilities, different human services and agencies established in the different countries, and government commitment to social agencies. Each Russian social worker took the opportunity to explain their dedication and commitment to human service in their country of origin. Students from the MSW program were able to ask questions, which were answered with graciousness and enthusiasm by the visiting guests. Students were amazed and delighted to have the opportunity to hear and learn about international social work, which is a special interest to many social workers in the MSW program. Both similarities and differences were discovered. Although students came together speaking different languages they were still able to engage, communicate and learn from one another.



**Students from the MSW program were able to ask questions, which were answered with graciousness and enthusiasm by the visiting guests.**



## Students Presenting at Council of Social Work Education Annual Program Meeting

Two second-year, full time students, Andrea Russo and Gina Ferraro will presented along with MSW program director Robin Russel at the 51st Annual Program Meeting in New York City. The Council for Social Work Education holds an Annual Program Meeting each year, bringing together thousands of participants from all over the country. The theme

this year is "One world, many cultures, new challenges." A new format at the conference includes a research series that, "promotes and highlights research and researchers in social work education" (*CSWE, 2005*). Russo, Ferraro and Russel presented research findings on the development of MSW courses with spiritual or religious focus. The paper will reports the results of a descriptive study of the development of spirituality courses in CSWE accredited MSW programs and discuss the implications of this research for curriculum development. Congratulations!



## A Student's Perspective on Field

This September, I began my field placement at Broome Community College. I thought I was going to be doing all types of social work things including counseling and helping people. I was ready to start saving the world one student at a time.

I was located in a different part of the building than where my field supervisor was. I was scared by all the freedom, and confused about what my supervisor expected me to do. She gave me a list of student names, informing me that their financial aid had been terminated. She asked me to call and let them know that they were ineligible or in serious jeopardy of not receiving additional funding for the upcoming semester. She encouraged me to assist them in any way that I could. I was displeased with this task and confused even more about my role. Despite this, I proceeded to call students week after week informing them that they could not meet the credit hour requirements for graduation. Due to the financial aid office's time frame their financial aid was going to be revoked. Again, I consulted my supervisor wondering how we could save these students from losing their financial aid and consequently, needing to drop out of school. I asked why after three weeks I was still not seeing the ties between my job and social work. My supervisor explained that as a social worker, I was working with an "at-risk" population. I nodded my head and left feeling

very unsatisfied with my field placement. "At-risk? At-risk of what?" I wondered. That's when it clicked for me. I was working with an at-risk population who were at-risk of dropping out. My supervisor and I discussed how I could implement preventative rather than punitive measures, that could help students before they lost their financial aid.

I worked closely with the financial aid office and my supervisor to identify students who were in jeopardy of losing their financial aid. I began to alert students of our concern and met with them to discuss their situations. I noted that oftentimes, students were not aware that they needed to complete their coursework within a certain time frame in order to keep their financial aid. I also discovered obstacles that were impeding their ability to complete their classes successfully and within this time frame.

Obstacles included teen parents having difficulty finding child-care while they were in class, domestic violence, and students who were homeless. It was through these conversations that I began to understand how I could implement skills I was learning and see how the role of a social worker could be useful.

Sharing my observations with my supervisor we discussed how best to respond. Writing letters that notified students and then meeting with them felt like first steps towards addressing a systemic problem, (notifying students prior to their losing financial aid). However we also needed to address the issues of retention and how to support students to be able to remain in school and complete courses in the time frame put forth by the financial aid office. I began to contract with students, outlining not only what classes they needed to complete successfully in order to keep their financial aid, but also began to address the obstacles students had. I remain in very close contact with these students, providing support, referrals and assistance for them to stay on track.

I have learned about important community resources as well as how to refer students to these services. The range of referrals varies greatly and includes: accompanying students to the Department of Social Services to get food stamps, assisting in getting their children enrolled in the WIC program, and helping teen mothers find free childcare. Not only do I get to practice my counseling skills, but I am also truly helping people. I love what I do, and I love that my supervisor sup-

ports the services that I am developing.

There may not always seem to be a connection at first between our role as a social worker and the tasks that come before us in our work. Through observations, identifying themes that clients present and using creative thinking, we can broaden the services we provide, build collaborative relationships and address bigger social or systemic problems. If you were to ask me now if social work and financial aid could work together, my answer would be that it I sure can!

- Elizabeth Orzel

## First Class to Graduate from the MSW Program this Spring!

My experience in the Masters of Social Work Program at Binghamton University has been most memorable. I will graduate along with 21 other students from a program that has facilitated the growth of the minds, bodies, and spirits of those who gave parts of themselves to the Division of Social Work at Binghamton University. I give many thanks to the professors, who so graciously made themselves available to their students, who for a variety of reasons looked to them for a helping hand. Faculty helped to carry the students through the program. I also thank my fellow students who will always carry a special place in my heart. Without them the shared dream of becoming a social worker could not have become a reality. I also am thankful to all the individuals whose dedication and commitment made this program become a part of the spirit of the local community and of Binghamton University.

Commencement is approaching; the first graduating class of the School of Social Work Program at Binghamton University is growing near. Faculty, staff, and students are anxiously anticipating this most remarkable event when we all come together to celebrate this occasion. I won't look at this as an ending, but as a new beginning for those of us who will embark on a new path in life, one that is a life changing endeavor, known as the field of social work.

~ Kim McAndrews

Commencement for the Social Work Program will be MAY 14th!



Kim McAndrews

## Updates on Faculty and Collaborations

**B**etsy Kelchner has just had another article published. Her article *Amy Ross: Body story or person story?* has been published in *Reflections: Narratives of Professional Helping*, 10, 68-74. (2004). She recently presented: Lessons learned: Infusing aging content in research courses via service-learning projects at the National Gerontological Social Work Conference in New York this month.

**L**aura Bronstein has been prolific in her work and publications! She will be partaking in several presentations in the coming months. Laura recently presented along with Mizrahi,

Korazim, and McPhee on *Preparing social workers for interdisciplinary collaborative practice at macro and micro levels* at the Annual Program Meeting, Faculty Development Institute, Council on Social Work Education in New York City. She and Zelman (a BU dual degree alumni), will present *The Neighborhood Health Advocate Project (NHAP): Enabling elders to age at home* at the Joint Conference of the American Society on Aging and the National Council on the Aging, Philadelphia, PA. If she weren't busy enough, she will present in April on *Promoting resiliency in women making the transition from welfare to work* at the Barry University School of Social Work Alumni conference in Miami Florida. At the end of 2004 Laura also presented with Zelman on *Neighborhood Health Advocate Program: Using community partnerships to create an interdisciplinary, faith-based initiative for maintaining older adults in their communities* at the American Association for Public Health Annual Conference in Washington, DC. Along with Kevin Wright from Human Development at Binghamton University. Laura had a poster presentation at the Addiction Health Services Research Conference in Philadelphia, Pennsylvania and she presented at the Family Violence Prevention Council. In Binghamton, New York on collaboration.

Laura and Admiraal are anticipating the publication of Implications of an aging population on the delivery of public sector social services in *Families in Society*, 86(1), 1-8.



Nikki Rosswog

**N**ikki Rosswog is working with Laura and Kevin Wright in the true spirit of col-

laboration. Nikki, a second year full-time MSW student conducts a telephone survey designed to learn more about prison hospice programs. Nikki has been conducting qualitative interviews with professionals in these pro-

grams from around the country. Our goal is to learn more about the collaboration (and lack thereof) between social work and criminal justice in these settings.

Laura also continues to support the leadership work of BU alumni Tanya Zelman, MASS, MSW who works with the Center for Excellence in Aging Services in developing, overseeing and evaluating programs that link health and faith communities to serve seniors. In addition she continues to work with another BU alumni Jamie Coccodrilli, MASS, MSW with Protective Services for Adults (PSA) in designing and evaluating family violence curriculum for PSA workers in NYS.

**M**itch Rosenwald is involved with several research projects relating to child welfare. In collaboration with the Child Welfare League of America, he is conducting a national survey to assess child welfare agencies' climate and service delivery system with respect to lesbian, gay, bisexual and trans-gendered (LGBT) issues.



*Vanessa Torres*

**V**anessa Torres, a graduate assistant who is also a full-time second year MSW student and Mitch are also working on a project with a local child welfare agency on barriers to placing children in foster homes. His article "Exploring the Political Diversity of Social Workers" has been submitted to *Social Work Research*. Mitch continues to volunteer as a group facilitator for Southern Tier AIDS Program.

## Job Opportunities?

As we prepare for our students to graduate this spring, please feel free to send postings for job opportunities and we will be certain to post them.

We hope to be able to post job opportunities for students on our web page soon!





**Division of Social Work  
Pursuing Possibilities**

Phone: 607-777-5999

Fax: 607-777-6041

<http://sehd.binghamton.edu/programs/msw>

**FIELD INSTRUCTORS**

Lori Accardi	Diana Legg
Aaron Ampula	Ellen Lloyd
Heather Anderson	Kim McCarthy
Roberta Armstrong	Mark McGinley
Kim Barker	Elaine McGraw
John Barry	Colleen McSweeney
Patrick Basille	Tom Mitchel
Pola Beagle	Maureen Moretin
Carole Belardinelli	Rebecca Mullford
Diane Brown	Peggy OConnor
Deb Callahan	Dara Raboy- Picciano
Kelly Clark	Barb Ravas
Terry Cole	Donna Rehak
Jack Conte	Beth Riley
Kris Cornwell	Kelly Roberston
John Davidson	Ed Rivera
Carrie Dean	Hyman Rubin
Joyce Decker	Dave Ruston
Kathi DiFulvio	Anne Rutlege
Bonnie Donovan	Kathy Saam- Winter
Linda Eichengreen	Kathleen Schlather
Vickie Fergus	Ruth Shenk
Heather Fitzgerald	Vanessa Shuba
Brian Flynn	Tina Slocum
David Flynn	Ken Smith
Ethel Forward	Lisa Smith
Greg Finch	Stephen Smith
Cindy Fletcher	Emily Scrivener
Nancy Frank	John Spencer
Mike Gorman	Melissa Spring
Tee Groff	Petra Stone
Larie Gutchess	Penny Thorpe
Mary Hickes	Anne Tinen
Valerie Hotchkiss	Jude Trepas
Russ Hollier	Judy Vieux
Sharon Kennedy	Anne Walls
Charlie Kramer	Cynthia Walsh
John Laura	Sandra Westgate
Keith Leahy	Jennifer Whitehead Brenda Ziolee

**Field Agencies**

Association of Retarded Citizens  
Addiction Center of Broome County  
Arnot Ogden Medical Center  
BOCES, Prospect Learning Center  
Broome Community College  
Broome County Department of Social Services  
Broome County Head Start  
Broome County Mental Health Department  
Broome Developmental Center  
Broome County United Way  
Broome County Drug Court  
BU Counseling Center  
BU Decker School of Nursing  
Catholic Charities of Broome County  
Catholic Charities of Chenango County  
Cayuga Medical Center  
Cedarhurst Elementary School  
Charles F. Johnson, Union Endicott School  
Chase Memorial Nursing Home  
Chenango Memorial Hospital  
Chenango County Department of Social Services  
Chenango County Mental Health Department  
Children's Home of Wyoming Conference  
Cortland Family Counseling Center  
Dryden Elementary School  
Family & Children's Society of Broome County  
Family Enrichment Network  
Fairview Recovery Center  
Goodhope Center for Youth  
Hilltop  
Hospice of Chenango County  
Jennie F. Snapp, Union Endicott School  
Johnson City Elementary Middle School  
Lourdes Hospice  
Maine-Endwell Elementary School  
Mental Health Association of the Southern Tier  
Morrisville State College  
Newark Valley Central School District  
Saint Josephs Hospital  
Southern Tier AIDS Program  
Southern Tier Independence Center  
State University of NY at Cortland, Counseling Center  
Tioga County Department of Social Services  
Tioga County Office of Mental Hygiene  
Tompkins County Department of Social Services  
United Health Services, New Horizons  
United Health Services, Ideal Living Center  
United Health Services, Emergency Unit  
United Health Services, ICU Unit  
United Health Services, Rehabilitation Unit  
United Health Services, Blood Disorder Unit  
United Health Services, Franklin and Roosevelt Schools  
United Health Services, Dialysis Unit